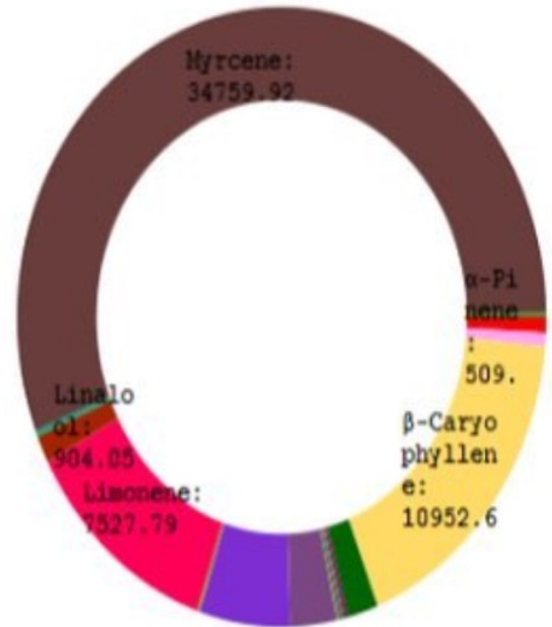


N.A.F.O.G.

INDUSTRIAL CBD SEED



TERPENE	ppm	percent	TERPENE	ppm	percent
2-ethyl-Fenchol	ND*	0%	γ-Terpinene	ND*	0%
(-)-α-Bisabolol	ND*	0%	Geraniol	ND*	0%
α-Pinene	509.44	0.05%	(-)-Guaïol	1773	0.17%
α-Terpinene	ND*	0%	Humulene	3427.11	0.34%
α-Terpineol	426.48	0.04%	(-)-Isopulegol	99.74	0%
β-Caryophyllene	10952.63	1.09%	Limonene	7527.79	0.75%
β-Pinene	1159.15	0.11%	Linalool	904.05	0.09%
Bisabolene	134.8	0.01%	Menthol	184.42	0.01%
Borneol	85.54	0%	Myrcene	34759.92	3.47%
Camphene	103.82	0.01%	Nerolidol	ND*	0%
(-)-Caryophyllene Oxide	ND*	0%	p-Cymene	ND*	0%
Cis-Ocimene	ND*	0%	Pulegone	ND*	0%
δ-3-Carene	ND*	0%	Terpinolene	108.87	0.01%
Eucalyptol	ND*	0%			
Farnesene	108.51	0.01%			



Total: 6.22%

Notes:

* None Reported (NR) because the compound exists at or below the detection limit of the method.

* None Detected (ND) because the compound was not detected.

Stephen Goldman
Laboratory Director

